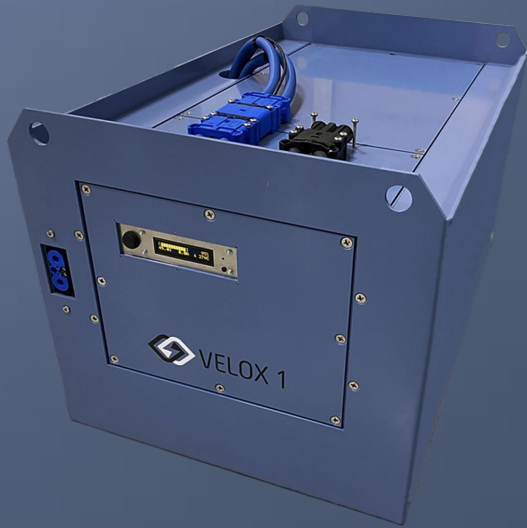


# VELOX 1

## FORKLIFT LITHIUM BATTERY



### FAST CHARGING

Up to 1200A of charging

### ONLINE

OTA cloud monitoring

### PROTECTIONS

15+ integrated protection measures.

### MODULAR

Personalized Energy designs

### HIGH CAPACITY

Compact and efficient

### DURABILITY

Rugged Steel Design

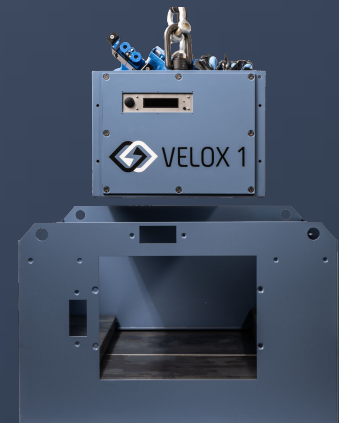
## VELOX 1

### PRODUCT DESCRIPTION

// Experience cutting-edge engineering with the Velox 1 battery, a powerhouse of energy storage that redefines the standard for industrial batteries.

// Our innovative modular design ensures that the Velox 1 battery seamlessly integrates with all major forklift brands, offering a hassle-free solution to replace traditional lead acid batteries. Say goodbye to compatibility concerns and hello to a hassle-free upgrade.

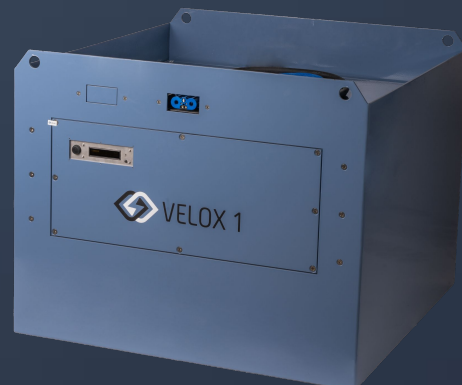
// Say goodbye to downtime and hello to peak efficiency with the Velox 1 battery. Our fast-charging capabilities are the key to unlocking uninterrupted productivity throughout your workday.



### FRONT VIEW



### SIDE VIEW



# KEY FEATURES

## POWER

Charge Connector/ Port	1 x EURO500FK
Input Power/ Max Charging current	MAX 400A CONSTANT, PEAK 2000A (10 SECONDS)
Avail Output Voltage	25.6/38.4/48/51.2/80/83.2/96/144V
Output Protection	800 ADC Fuse
Avail Battery Capacity	200/320A/450/500/650/700/800/920/1000AH

## ALARM OUTPUT

Alarm Output	1 x Remote Buzzer ; 1 x Integrated Speaker Alarm
--------------	--

## GENERAL CHARACTERISTICS

Lithium cells	LiFePo4 Cell Technology, compliant with UL Safety
Compatible Devices	RHL-SOC-BUZZ; RHL-WIFI; RHL-HYG; RHL-LTE

## PHYSICAL SPECIFICATIONS

Casing Material	Steel Housing
Dimensions (W x D x H)	Made to truck specs
Weight	Made to truck specs +1,5% (additional weight avail)

## BMS PROTECTION

Protection settings	OverCurrent, Voltage, Temperature,, Humidity, Current Sensor, ShortCircuit, Contactor Cycle, CellCount, High charging current, Isolation monitoring device
---------------------	--

## PHYSICAL INTERFACES (PORTS, LED, BUTTONS)

Power OUT (Discharging)	ANDERSON SB
Status LEDs	1 x Remote Indicator 10 - LED; 1 x 2-line OLED display
Switch	On/Off Push button
CAN Truck	Available if forklift OEM can provide protocol specs
Power IN (Location)*	A(standard)

